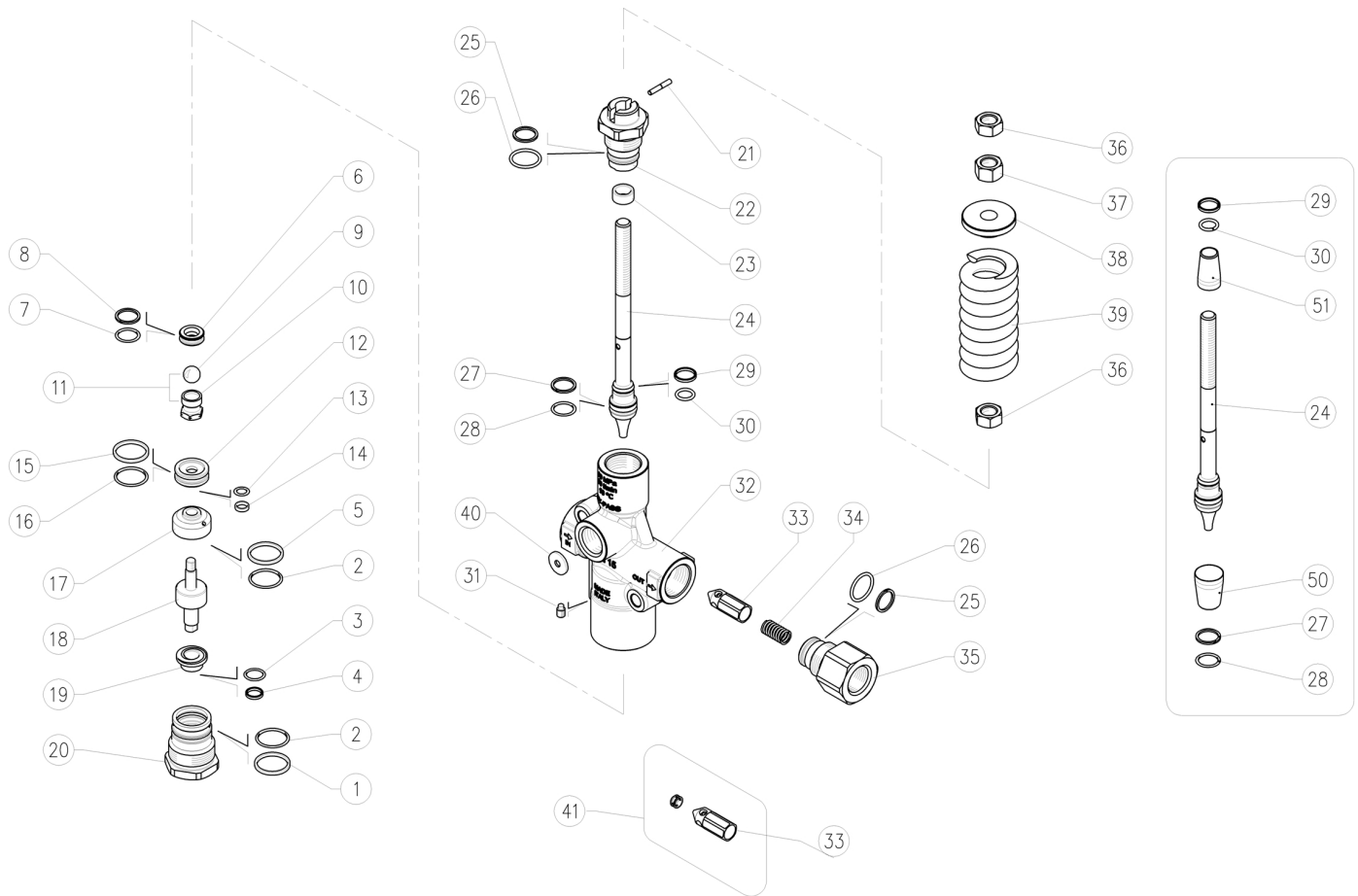


60.2600.00 VB60/600 Zero Unload.-flow activated 1/2Bsp
60.2600.25 VB60/250 Zero Unload.-flow activated 1/2Bsp

60.2600.40 VB60/400 Zero Unload.-flow activated 1/2Bsp



K1 K2 K3 K4

| | | | | | | | |
|----|-------------|-----------------------------------|---|---|--|--|----|
| 1 | 10.4098.00R | Back-up ring, 23,2x26x1,2mm | 1 | • | | | 10 |
| 2 | 10.3072.60R | O-ring, 1,78x21,95 mm Ni 85 | 2 | • | | | 10 |
| 3 | 10.3058.01R | O-ring, 1,78x10,82 mm | 1 | • | | | 10 |
| 4 | 10.4055.00R | Back-up ring, 9,2x11,2x2 mm | 1 | • | | | 10 |
| 5 | 10.4059.00R | Back-up ring, 20x22x2 mm | 1 | • | | | 10 |
| 6 | 60.2615.51R | Sst seat, 8,5 mm | 1 | • | | | 5 |
| 7 | 10.3060.01R | O-ring, 1,78x12,42 mm Ni 85 | 1 | • | | | 10 |
| 8 | 10.4013.00R | Back-up ring, 16x13,2x1,2 mm | 1 | • | | | 10 |
| 11 | 60.2616.21R | Shutter pin, M6 sst+ball, 13/32" | 1 | • | | | 5 |
| 12 | 60.2606.51R | 7 mm sst piston ring | 1 | | | | 3 |
| 13 | 10.3056.00R | O-ring, 1,78x8,74 mm | 1 | • | | | 10 |
| 14 | 10.4007.60R | Back-up ring, 7x9,7x2,2 mm | 1 | • | | | 10 |
| 15 | 10.4041.00R | Back-up ring, 19,3x22x1,2 mm PTFE | 1 | • | | | 10 |
| 16 | 10.3070.02R | O-ring, 1,78x18,77 mm Ni 85 | 1 | • | | | 10 |
| 17 | 60.2609.51R | Spacer ring 7 mm | 1 | | | | 3 |
| 18 | 60.2607.51R | Sst pin | 1 | | | | 5 |
| 19 | 60.2610.51R | 9,2 mm sst piston ring | 1 | | | | 3 |
| 20 | 60.2604.51R | Lower plug, sst | 1 | | | | 3 |
| 21 | 60.2611.51R | Pin, 3,1x18 mm Sst. | 1 | | | | 5 |
| 22 | 60.2603.51R | Piston holder, sst | 1 | | | | 5 |
| 23 | 26.1046.84R | Bushing, 10x14x7 mm Plast. | 1 | • | | | 10 |
| 24 | 60.2602.51R | Sst. valve piston | 1 | | | | 5 |
| 25 | 10.4099.00R | Back-up ring, 17,2x20x1,2mm | 2 | • | | | 10 |
| 26 | 10.3068.01R | O-ring, 1,78x17,17 mm Ni 85 | 2 | • | | | 10 |

K1 K2 K3 K4

| | | | | | | | |
|----|-------------|--|---|---|--|--|----|
| 27 | 10.4161.00R | Back-up ring, 18 mm | 1 | • | | | 3 |
| 28 | 10.3060.00R | O-ring, 1,78x12,42 mm | 1 | • | | | 10 |
| 29 | 10.4162.00R | Back-up ring, 14,2 mm | 1 | • | | | 3 |
| 30 | 10.3057.00R | O-ring, 1,78x9,25 mm | 1 | • | | | 10 |
| 31 | 16.2203.00R | Set screw, DIN915 M6x10 mm Sst. | 1 | | | | 10 |
| 32 | 60.2605.55R | Housing -VB60/600 Zero, 1/2 .Bsp F sst | 1 | | | | 3 |
| 33 | 60.2608.51R | Sst shutter | 1 | | | | 5 |
| 34 | 60.2617.51R | Sst spring, 1,3x8,5x24 mm (1,2) | 1 | | | | 5 |
| 34 | 60.2601.51R | Sst spring, 1,3x8,5x28,5 mm (3) | 1 | | | | 5 |
| 35 | 60.2612.51R | Shutter coupl., 1/2F Bsp sst | 1 | | | | 3 |
| 36 | 11.4629.00R | Hex. nut, M10 | 2 | | | | 10 |
| 37 | 11.4630.00R | Hex. nut, M10 | 1 | | | | 10 |
| 38 | 60.2614.51R | Spring holding washer, sst (3) | 1 | | | | 5 |
| 38 | 60.2619.51R | Spring holding washer, sst | 1 | | | | 3 |
| 39 | 60.0434.61R | Spring, 8,5x38x80 mm black (3) | 1 | | | | 3 |
| 39 | 60.0411.61R | Spring, 6,5x33x70 mm white (1) | 1 | | | | 3 |
| 39 | 60.0412.61R | Spring, 7,5x35x70 mm blue (2) | 1 | | | | 10 |
| 40 | 60.2629.31R | Nozzle, 2,5 mm brass ** | 1 | | | | 10 |
| 40 | 60.2623.31R | Nozzle, 3,0 mm brass ** | 1 | | | | 10 |
| 40 | 60.2624.31R | Nozzle, 4,5 mm brass x1/2 Bsp ** | 1 | | | | 10 |
| 41 | 60.2622.24 | Spare kit seat/check valv.pcs.2x1 ** | 1 | | | | 1 |
| 50 | 10.4407.00R | Seal frame >VB60-80 zero ** | 1 | | | | 1 |
| 51 | 10.4408.00R | Seal frame >VB60-80 zero ** | 1 | | | | 1 |

**



| | | | | | | | |
|----|------------|-------------------------------------|---|--|--|--|--|
| K1 | 60.2618.24 | Spares kit -VB60/600.Zero, 20x1pcs. | 1 | | | | |
|----|------------|-------------------------------------|---|--|--|--|--|

(1) 60.2600.25 (2) 60.2600.40 (3) 60.2600.00