

# K 891 • 991 TS

**PREMIUM**

**HOT WATER  
SEALS**

**TSR**



Reversible handlebar  
*Manubrio reversibile*



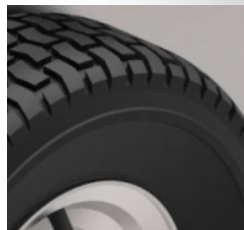
Stainless steel cover  
*Telaio in acciaio inox*

Stainless steel pressure gauge  
*Manometro in acciaio inox*

**RW Premium**

With integral ceramic pistons and brass pump head

*Con istoni in ceramica integrale con testata in ottone*



Pneumatic wheels  
*Ruote pneumatiche*





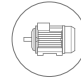



FOR MORE INFO:  
MAGGIORI INFORMAZIONI:



## GENERAL FEATURES · CARATTERISTICHE GENERALI

- Heavy duty structure with stainless steel cover
- Handy and secure housing of the hose reel (when applicable) in back position on the handlebar
- Readily serviceable brass suction filter
- Hot water seals
- 4-pole motor (1400 rpm) well oversized and protected with paint
- Professional unloader valve
- Delayed Total Stop
- Exclusive pump-motor coupling system for intensive use
- Contactor
- Motor thermal protection
- *Struttura robusta ed affidabile con cofano in acciaio inox*
- *Pratica e sicura collocazione dell'avvolgitubo (quando previsto) in posizione posteriore sul manubrio*
- *Filtro aspirazione in ottone ispezionabile*
- *Guarnizioni ad acqua calda*
- *Motore a 4 poli (1400 giri/min) ampiamente sovradimensionato e protetto da verniciatura*
- *Valvola regolazione pressione professionale*
- *Total Stop ritardato*
- *Esclusivo sistema accoppiamento pompa - motore per uso intensivo*
- *Teleruttore*
- *Protezione termica motore*
- *Uso professionale intensivo*

## TECHNICAL FEATURES · CARATTERISTICHE TECNICHE

CODE CODICE	MODELS MODELLI	PUMP POMPA													
			Ph	V	Hz	bar	MPa	bar	MPa	l/h	HP	kW	kW	kg	(L x W x H) cm
9024 4072	K 891 TS 15/230 T	RW Premium	3	400	50	230	23	30±220	3±22	330÷900	9,0	6,7	7,3	70	60 x 115 x 88
9024 4073	K 891 TS 21/180 T	RW Premium	3	400	50	180	18	30±160	3±16	560÷1260	9,0	6,7	7,3	70	60 x 115 x 88
9024 4071	K 991 TS 15/270 T	RW Premium	3	400	50	270	27	50±260	5±26	400÷900	10,0	7,4	8,5	75	60 x 115 x 88
9024 4074	K 991 TS 17/250 T	RW Premium	3	400	50	250	25	30±240	3±24	360÷1020	10,0	7,4	8,5	75	60 x 115 x 88
9024 4057	K 991 TS 21/210 T	RW Premium	3	400	50	210	21	30±200	3±20	490÷1260	10,0	7,4	8,5	75	60 x 115 x 88

## STANDARD EQUIPMENT · DOTAZIONE STANDARD



GH 401 gun with extension and swivel (n.2 o-ring)  
Pistola GH 401 con estensione e swivel (n.2 o-ring)



Bent lance with detergent head, without nozzle  
Lancia angolata con testina detergente, senza ugello



25° spray nozzle, 1/4" MEG connection  
Ugello con getto a lama 25° attacco 1/4" MEG



Ejector kit  
Kit eiettore



10 m rubber delivery hose kit  
Kit tubo gomma mandata 10m



Brass inlet water filter  
Filtro aspirazione acqua in ottone