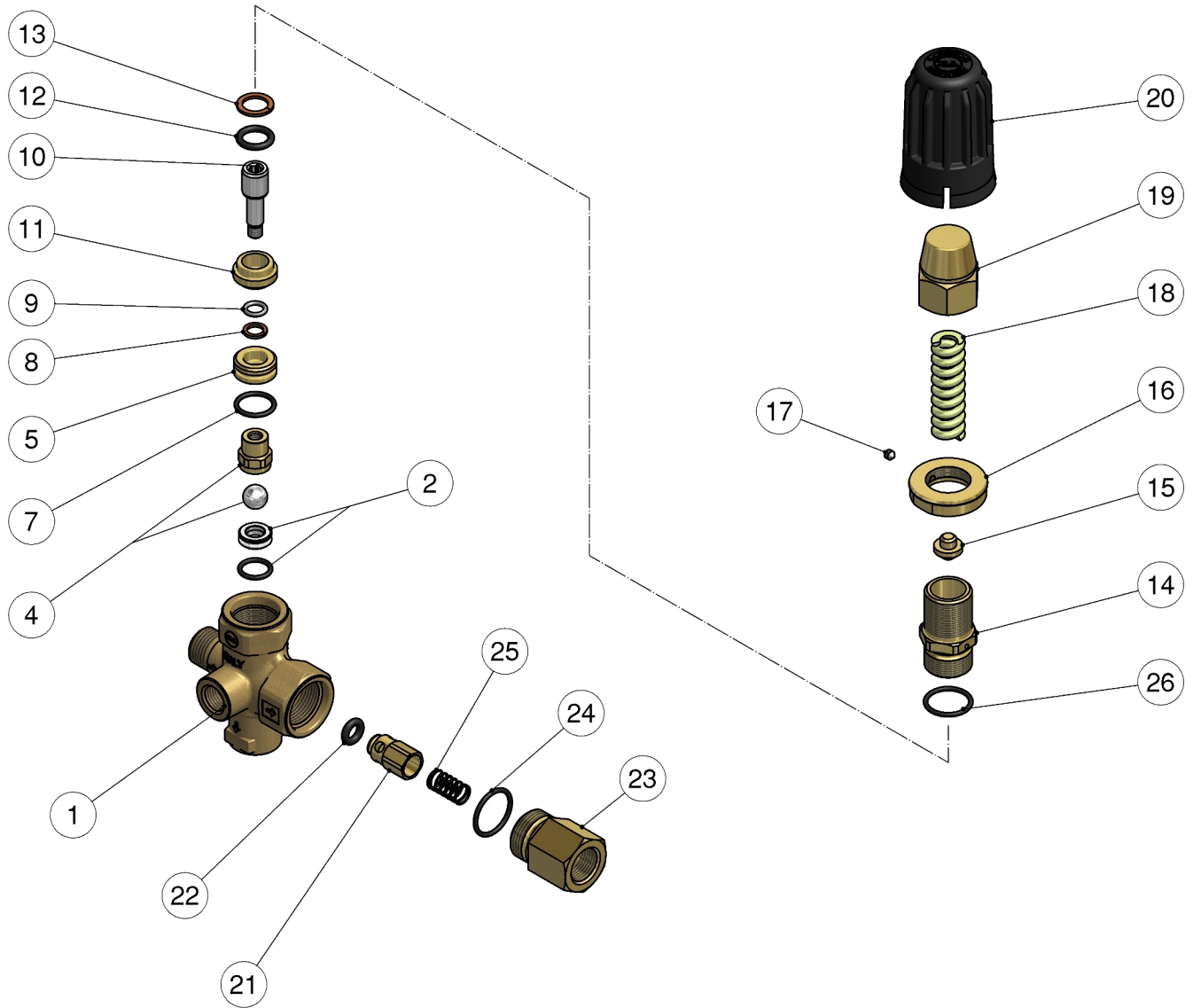





60.1300.10 VB5 unload. 3/8F Bsp, port:3/8M



	K1 K2 K3 K4 			
1 60.1305.35RHous.-VB5, 3/8M Bsp c/sunk+1/4F Bsp brs	1			1
2 60.1306.20RSeat, 8mm+O-ring, 1,78mm NBR85	1	•		10
4 60.1311.21RShutter pin, M6 brass+ball, 13/32" Sst.	1	•		10
5 60.1318.31RSpacer ring, x o-ring d.18 mm brass	1			10
7 10.3064.01RO-ring, 1,78x14 mm Ni 85	1	•		10
8 10.4007.00RBack-up ring, opn. 7x10x1,2 mm	1	•		10
9 10.3052.02RO-ring, 1,78x6,75 mm Ni 90	1	•		10
10 60.1307.51RPiston, M6 Sst.	1			10
11 60.1317.31RSpacer ring, 18,5 mm brass	1			10
12 10.3175.08RO-ring, 2,62x10,77 mm Ni 85	1	•		10
13 10.4017.00RBack-up ring, opn. 15,5x10,9x1,2 mm	1	•		25
14 60.1314.31RPiston holder, brass-VB56	1			10
15 60.1313.31RSpring guide pin	1			10

	K1 K2 K3 K4 			
16 60.1312.31RRing nut, M20x1 brass	1			10
17 16.2100.00RSet screw, DIN914 M4x4 mm	1			10
18 60.1315.61RSpring, 3,4x13,8x48 mm z.pl.	1			10
19 60.1304.31RValve regulating insert, brass	1			5
20 60.1202.84RValve regulating knob, PA black	1			5
21 60.0052.99RShutter pin, brass+o-ring 3x6 mm	1			10
22 10.3213.00RO-ring, 3x6 mm	1	•		10
23 60.0058.31RDelivery coupl., 3/8F Bsp brass	1			5
24 10.3070.02RO-ring, 1,78x18,77 mm Ni 85	1	•		10
25 60.0053.51RSpring, 0,7x9x20 mm Sst.	1			10
26 10.3068.01RO-ring, 1,78x17,17 mm Ni 85	1	•		10
27 14.3911.00RWasher, 13,5x19x1,5 mm Cu **	1			10
28 28.0013.31RPlug, brass 1/4 Bsp **	1			25

**

	K1 K2 K3 K4 			
K1 60.1321.24 Spares kit -VB5II°-VB56, 10x1pcs.	1			1